

TELEMETRY

SIMPLE SOLUTIONS FOR COMPLEX PROBLEMS



About Us

Technology | Infrastructure | Strategy

i-Telemetry Technologies is a pioneer in automating acquisition and transmission of real-time data from remote sources to IT systems to monitor and analyze data, performance and quality.

We are a digital transformation consultancy and engineering company that delivers cutting-edge solutions for global organizations and technology startups.

**PROVIDING
SIMPLE
SOLUTIONS
FOR COMPLEX
PROBLEMS**

Since 2020 we have been helping companies and established brands reimagine their business through digitalization.

Headquartered in Noida, we have a fully-equipped high-tech technology and R&D center in Noida.

We architect and align your requirements to the best technology and solutions with our expertise. Choose from our range or Contact us to customize your solutions.

"Accelerate your business with Innovative IT solutions"

Who We Are

Digital solutions for consumers

Result-Oriented Mindset

Ensure Security, Scalability & Flexibility

Client-Centric Attitude

Reliable and cost-effective

IT Infrastructure and Environment Intelligence
Technology partner helping industries combat data processing challenges with the power of IoT, Data Analytics, and AI-enabled softwares.

24/7 Support

End-to-End Development

Testing & Maintenance

Easy installation & setup

Fully customizable options

Project Planning & Implementation

Our rich technical expertise



Mission

Our mission is to be a market leader of information technology by delivering the most advanced innovations and technology to various industries and business. We want to become a technology partner by creating technology as an easy asset for every business keeping in mind the welfare of our environment and community.

Vision

Our focus is innovating simple yet powerful solutions. We provide technology that gives the end-user ease of operation. Our process includes various steps, from requirements analysis, research, and design creation to development, quality assurance, and support. Our team understands the heart of the technology.

“We believe Technology must be created with creativity”

Value

Our employees are the most valuable resource we possess. We focus not only on their skills and expertise, Our clients are the main key to success, long-term partnership, and close collaboration with quality software services. We take care of services as we believe it to be a key factor in every project's success.

How we do it



Idea

Our team is having wide experience in making innovative crafted ideas on business.

We are experts on crafting project design with 100% satisfactory deliverance results.



Design



Development

We are experts on crafting project design with 100% satisfactory deliverance results.

We always here to test, advise and solve business problems on any aspect of your website.



Test



Go Live

We launch our projects on time with amazing results and brings it with a boom to the market.

Our Solutions / Services

I-TTPL is an award-winning consultancy that uses it solutions to solve complex business challenges

**Real Time Data
Acquisition &
Monitoring System**

**Data Analytics
& Reporting**

**Automation
& Process
Control**

**Security
Solutions**



Industrial Data Acquisition & Monitoring System

Real time data acquisition & monitoring system

Expertise: End-to-end, secured/encrypted data acquisition, physical/cloud-based data acquisition, real-time.

DATA ACQUISITION SOFTWARE- TELEPRO

**Air, Emission
& Effluent**

**PCB
Connectivity**

**Remote
Calibration**

**Camera
Monitoring**

**TelePRO
OCEMS**

**Architecture
(N/W, H/W,
S/W)**

**Optima-IoT &
DataLogger**

Reports

Alerts



Real-time
Monitoring



Accurate
Timestamps



Secure Two-Way
Communication



Multi-Tenancy &
User Access



Data Logging



Delayed Data
Flags



Audit Logs



Data
Management



Data Storage



Data
Organization



Reporting



Workflow
Management



Location Mapping



Camera Surveillance



Real-time Alerts

How TelePRO Functions

In order to strengthen your pollution control policies, our IoT gateways capture credible and accurate measurements of air, emission and effluent which are then securely transmitted through an API to be displayed on a dashboard and generate custom report and alerts.

Our continuous monitoring systems provide real-time data at higher frequencies and are aimed at facilitating effective pollution reporting, timely mitigation measures, process optimization and better compliance.

Industrial Data Analytics & Reporting

**Industrial Asset
Management**

**Asset Performance
Monitoring**

**Yield Optimization &
Quality Control**

**Data visualization &
representation
(Reports & Alerts)**

Industrial Analytics

Asset Performance Monitoring

Manufacturing plant assets are one of your biggest investments, which is why it's crucial to improve the visibility of their utilization on a continuous basis. Our analytics solutions track and monitor asset performance KPIs (asset downtime, waste, production counts, including overall equipment effectiveness (OEE)) intelligently. The insights drive improvements in utilization, reliability and system efficiency, while extending equipment lifecycle.

To optimize throughput, industrial manufacturers must strike a fine balance between speed and yield. For this, they need a highly- responsive, automated system to control the process and maximize yield. Prescriptive edge analytics provide the closed-loop, low-latency insights needed to respond to changes in conditions at high speeds. The insights can be integrated with your production and business management systems to help lower manufacturing costs while increasing production.

Yield Optimization

Quality Control

In high-speed production scenarios, it's common for quality problems to go undetected for a long time until it affects throughput or the brand. Furthermore, high scrap wastage or energy usage can create quality compliance issues. With enhanced industrial data contextualization at the source, you can not only identify the root cause of a quality issue sooner, but also control costs by reducing energy usage and scrap in the production process—at scale.



iOS App
Development



Android App
Development



Hybrid App
Development



UI/UX Design



Strategy &
Consulting

MOBILE APP DEVELOPMENT

Result-Driven | Customer-Centric | User-Friendly

At i-Telemetry, we leverage top-notch technologies (like Cloud, Artificial Intelligence and Internet of Things) to build compelling applications that deliver complete mobility solutions while catering to the ever-evolving needs of business, industry and end-users. With an in-house team of skilled techies focused on bringing excellence and innovation to each product, we keep a keen eye on emerging trends and offer comprehensive application development solutions that take your business to the next level.



Healthcare



Real Estate



Banking &
Finance



E-Learning

Industries
we cater



Transport
& Logistics



M-Commerce
(B2B and B2C)



Media &
Entertainment



Travel &
Hospitality

Why i-Telemetry for Mobile App Development?

- ✓ Feature customizations for your business, at the best prices, in the shortest time
- ✓ Project development tracking with timely progress reports
- ✓ In-house team of experts & experienced analysts, designers and developers
- ✓ Dedicated team for product support, maintenance, upgrades & enhancements
- ✓ Rigorous testing to ensure end-product drives profitability
- ✓ Development of highly innovative solutions that are secure & scalable

“Mobile Applications Customized to Meet Every Business Need ”

We have developed best-in-class native and hybrid mobile applications across industry verticals for small, medium and large scale enterprises. From careful planning and efficient resource utilization to finding the right technology and delivering products built for success, we offer best-in-class mobile app development services.



We
Specialize
in

**Software
Solutions**



**Environment
Management**



**End-to-end
IT Services**



**Water
Management**



TelePRO™

TelePRO Android App

Our innovative and interactive dashboards help you track key metrics and critical data points using effective data visualization and data analytics. Our dashboards are especially designed to empower both technical and non-technical users to monitor, measure and analyse real-time intelligence to make well-inform Decision



With a team of 60+ subject matter experts, we have successfully completed 90+ projects across 2200+ enterprises.



TELEMETRY

CAMERA CONNECTIVITY

We Take Care of Your Environment Data Management & Compliance Needs

Tech. Support to integrate Cameras with PCBs

Easy Integration

RTSP Based

Direct Feed

PTZ Controls

Our IoT enabled comprehensive solutions are designed in accordance with the latest SPCB/CPCB guidelines to ensure uninterrupted connectivity, regulatory compliance and low operating costs. As pioneers and experts, we have successfully designed, installed and maintained robust and secure continuous emission/effluence monitoring systems across a wide range of industries.

Our solutions are backed by years of technical experience, in-depth knowledge and a team of experienced and skilled technology specialists.

Services We Offer



Continuous Emission Monitoring Systems



SPCB/CPCB Data Connectivity Systems



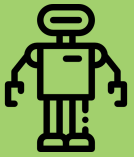
Camera Connectivity to SPCB/CPCB

Optima Series

Data Logging & Archival
Hassle Free Configuration (Wireless)
Graphical User Interface
Automation of assets
Modbus Analog TCP/IP
LTE Onboard HMI/LCD



Optima IoT



Automation



Asset
Management



Remote
Calibration



Optima Data Logger



Logging



Transfer



Archival



Optima Signage



Plug & Play



Realtime Data



HDMI Output

Industrial Automation Services



Line Optimization &
Re-calibration



Automated Quality
Inspection Systems



Process Automation Services



Factory Automation



Batch Process Automation



Manufacturing Execution
System (MES)

Industrial Automation

Process Control



Industrial Asset Management Improve Reliability with Plant and Machine Maintenance Services - An effective asset management strategy can help you improve asset availability, boost OEE, and reduce your MRO spend on a day-to-day basis. Our Industrial Asset Management services can help you get the most from you operations, proactively address downtime issues, and help manage risks.

Industrial Asset Management

Data-driven Asset Management Strategies

A comprehensive asset management strategy combined with the right technology can transform maintenance from an expense into a strategic, competitive asset

Take Performance to a New Level and Get Ahead of Downtime IssuesOur reliability tools, assessments, and performance monitoring can help you get the most from your assets and identify issues before they materialize into downtime events. We use a scalable approach to service your performance and reliability demands. Certified by the Society for Maintenance and Reliability Professionals, our domain experts can help you:

**Digest
the data**

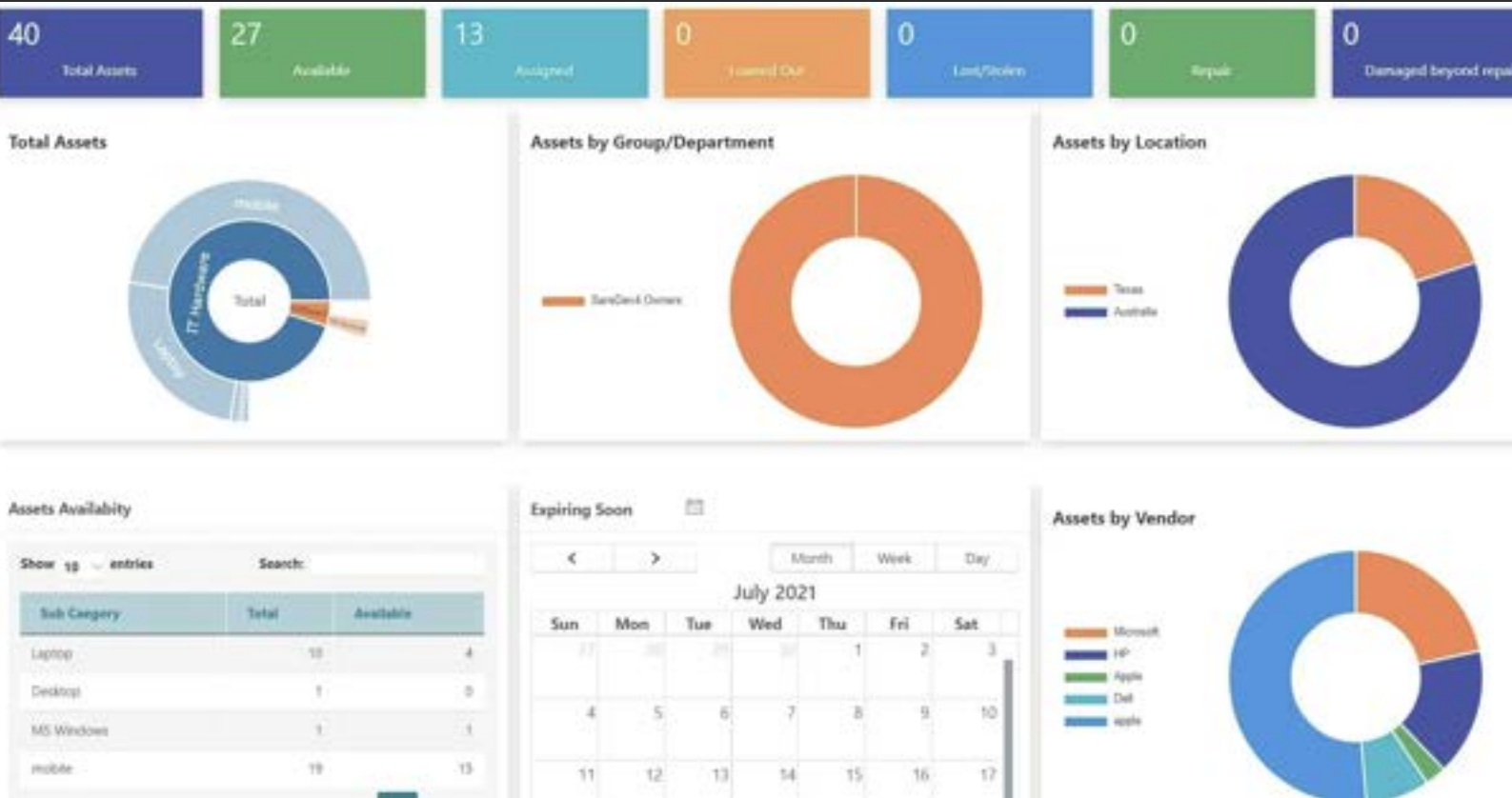
**Develop the
solution**

**Perform the
remediation**

Asset Performance Management

Asset and Plant Optimization

Data-driven services improve operational and financial performance reduce costs & improve your maintenance decisions by applying our expertise to your plant data.



Inventory Services

Transform Your Inventory Management into a Lean, Cost-saving Machine

Do you have a build-up of unnecessary inventory?

Are you missing cost savings that could come from optimizing your storeroom? Or maybe you want to improve the reliability of your spare-parts inventory to keep operations running? Take the headache out of repair and inventory management with improved processes and service agreements. Our Inventory Services can help you:

Have ready access to the right spare parts, when you need them

Reduce your MRO costs and improve maintenance decisions with MRO demand management

Improve your storeroom design and processes for continuous cost savings

Provide comprehensive inspection and testing to ensure the integrity of critical spare

Storeroom Management /Parts Management

MRO Inventory Management

FLEET

Management



TELEMETRY

DVIR
Defects



DTC
Alerts

Manufacturing

Recalls

Maintenance
Schedules



Fuel Receipts



Vehicle
Inspection



Driver
Assignments

Fleet and OEM tendering

Telematics and risk management

Supply chain assessments

Equipment Monitoring

Site Visibility & Security

Safety Reporting & Insights

Asset Tracking & GPS Fleet Tracking

Mobile Experience Management

Reports & Alerts

Cloud based platform overview

Solutions



Fleet Management

Track every detail about your vehicles and equipment from cradle to grave.



Fuel Management

Simplify fuel data collection and gain insight into costs and fuel economy.



Fleet Maintenance

Schedule and automate in-house and third-party maintenance processes.



Equipment Management

Maintain control of small equipment and tools from anywhere.

Features

Preventive Maintenance:

Stay on top of preventive maintenance tasks for every asset.

Inspections:

Maintain compliance with electronic inspections.

Issue Management:

Resolve issues quickly to maximize uptime.

Driver Assignments:

Assign vehicles and equipment to drivers and operators.

Work Orders:

Plan, schedule and track service tasks and costs.

Parts & Inventory:

Track part quantities, record usage and reorder with ease.

Reporting:

Understand the true cost of running your fleet.

Mobile App:

Maintain control of small equipment and tools from anywhere.

Integration



Integrations Overview

Capture all your fleet data in one place with seamless integrations.



Maintenance Shops

Streamline third-party maintenance provider orders, approvals and billing.



GPS & Telematics

Sync odometer readings, manage DTC alerts and view current asset locations.



Fuel Cards

Automatically import fuel transactions and receive alerts for invalid odometers.

Control the chaos of fleet management in any industry



Aviation Fleet

Take control of your maintenance workflow including expenses while reducing downtime for all of your aircraft fleet assets.



Vessel

Keep your vessel fleet sailing with a solution to manage maintenance, inspections, inventory and expense control.



Education

Better solutions for education fleets that allow you to seamlessly track spending and improve driver safety.



Food & Beverage

Streamline food & beverage fleet operations through mobile app-based inspections and streamlined route efficiency.



HVAC

Improve every aspect of your fleet management operations and maximize efficiencies across your HVAC fleet.



Utility

Equip your utility fleet with paperless, mobile inspections and better control over fuel efficiency.



Transportation

Take your transportation fleet even further with robust driver tracking and maintenance management capabilities.



Oil & Gas

Enhance your oil & gas fleet through streamlined communication, collaboration and robust maintenance tracking capabilities.



Amazon Delivery

Reduce wasted time and costs by managing your Amazon delivery fleet with a centralized fleet management software.



Construction

Automate construction fleet operations to reduce asset downtime, lower fuel costs and ensure compliance.



Contractor & Electrician

Charge up your contractor fleet management solutions with digital vehicle inspections, tracking and automated maintenance workflows.



Farm Equipment

Simplify your maintenance program and effectively manage your fleet to maximize the lifespan of your farm equipment and vehicles.



Government

Ease the burden on your government fleet while improving vehicle utilization and across-the-board regulatory compliance.



Waste Management

Gain full control over vehicle maintenance, driver safety and fuel expenses for your waste management fleet.



Plumbing

Gain visibility across your plumbing fleet with proactive solutions to track vehicles, prevent downtime and manage expenses.



Trucking

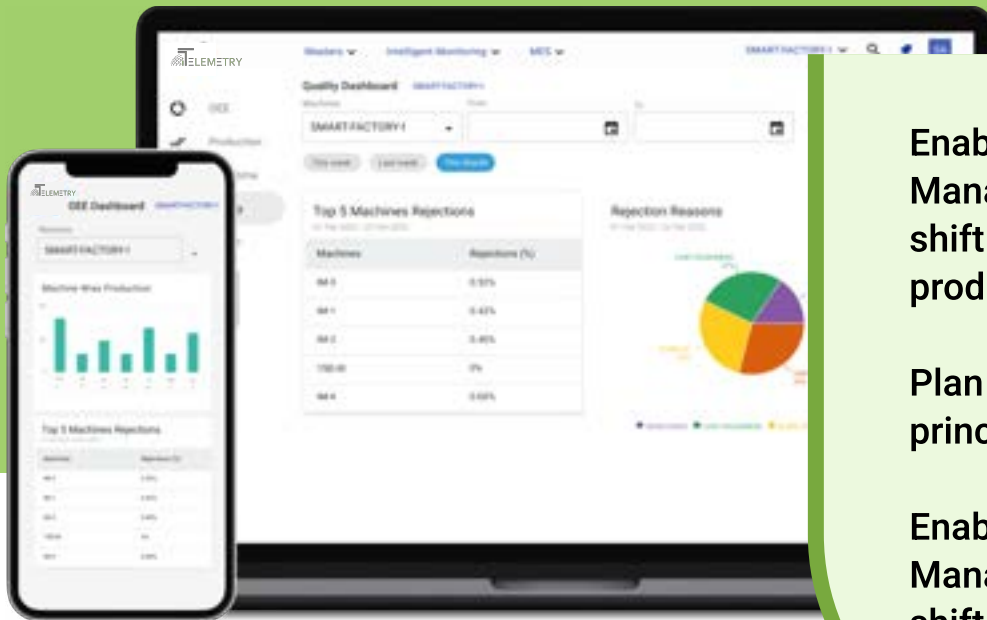
Mobilize your trucking fleet with better fuel cost control, driver management capabilities and productivity enhancements.



Vehicle Leasing

Real-time tracking, better visibility into fuel costs and mobile inspections—all available to your vehicle leasing fleet.

Manufacturing Execution System



Enables Production & Planning Manager to efficiently plan the shift wise/daily/weekly production

Plan Production based on lean principles to avoid wastage

Enables Production & Planning Manager to efficiently plan the shift wise/daily/weekly production

With App You Get:

Better Control

Get one system that connects production planning, execution, downtime, quality and customer orders

Higher Utilization

Trace and control inefficiencies and deviations on real time basis

Power of data

Set key red flags and get alerts that need intervention and take decisions based on metrics

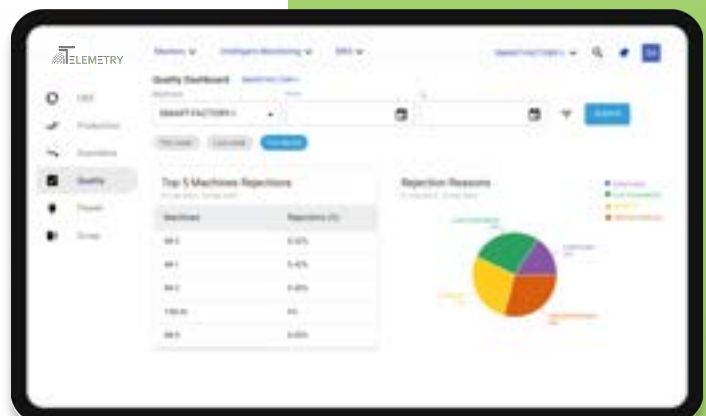
Production Planning & Execution

Downtime Tracking

Maintenance Management

Order Tracking

Quality Management





SECURITY SOLUTIONS

Transition from reactive risk mitigation strategies towards more intelligent and adaptive security models to stay a step ahead of threats to data confidentiality and integrity. At i-Telemetry, we take a dynamic and comprehensive approach to ensure timely risk identification and management through real-time security intelligence.

Make Security A Priority With Our Specialized Solutions

- ✔ Threat & Vulnerability Management
- ✔ Identity & Access Management
- ✔ Security Strategy & Operations
- ✔ Data Centre & Cloud Safety Management
- ✔ Application Security
- ✔ User Management – Authentication & SSO

Permit

- Authentication, Authorization & Accounting
- Multifactor Authentication
- Network Segmentation stitch
- Physical Security
- Secure Remote Access

Protect

- DLP, HIPS, Whitelisting
- Endpoint protection, Anti-malware, Vulnerability Scan
- Patch Management & Multi Layered Protection
- Comprehensive Endpoint Security and Control
- Network Protection- Firewall, Port Scan Attack Prevention, DDOS Attack Prevention

Detect

- Security Information & Event Management (SIEM)
- Network performance monitoring
- Asset Identification
- Anomaly detection
- Intrusion detection

Response to windows

- Backup, disaster recovery
- Forensics & incident response

Our Clients

