

## About



i-Telemetry Technologies is a pioneer in automating acquisition and transmission of real-time data from remote sources to IT systems to monitor and analyse data, performance and quality.

Headquartered in Noida, we have a fully-equipped high-tech technology and R&D centre in Noida.

## Experience Modern Environment Management with TelePRO



Eliminate the need for manual inspection with our emission monitoring system that collects real-time data for air, emission and effluent inspection and analysis.

Monitor real-time information, examine reports, facilitate easy communication within your MIS and manage workflows from a single central platform thus saving significant time and cost.

### MIS & Workflow

Timely reports & easy-to-read dashboards

- New industry registration
- Automated e-notices via SMS/Email
- Data validation & workflow management

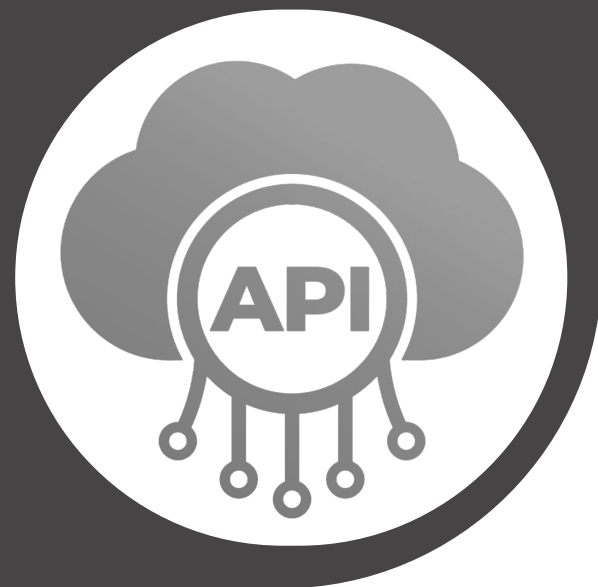
### API

Seamless integration with

- Environment Analyzers
- Cameras & NVR
- Other Regulator Servers



1. Single API for uploading secure, reliable, real-time air, emission and effluent data from remote sites.
2. Timely and automated compliance alerts and e-notices to all stakeholders, decision-makers and regulatory officials
3. Seamless integration with other remote regulator servers
4. Prompt escalation of non-compliant industries to the regulatory body
5. Hierarchical workflows for data modification and equipment/plant maintenance requests from industry to regulatory body
6. Analytics dashboard, automated reports & slideshows for remote monitoring, diagnostics & actionable insights for performance improvement



## We specialize in

- > Complete Software Solutions
- > Environment Management
- > End-to-end IT Services
- > Water Management

With a team of **60+** subject matter experts, we have successfully completed **90+** projects across **2200+** enterprises.

## Dashboards

Our innovative and interactive dashboards help you track key metrics and critical data points using effective data visualization and data analytics.

Our dashboards are especially designed to empower both technical and non-technical users to monitor, measure and analyse real-time intelligence to make well-inform Decision





Real-time Monitoring



Accurate Timestamps



Secure Two-Way Communication



Multi-Tenancy & User Access



Data Logging



Delayed Data Flags



Audit Logs



Data Management



Data Storage



Data Organization



Reporting



Workflow Management



Location Mapping



Video Streaming



Real-time Alerts

## How TelePRO Functions

In order to strengthen your pollution control policies, our IoT gateways capture credible and accurate measurements of air, emission and effluent which are then securely transmitted through an API to be displayed on a dashboard and generate custom report and alerts.

Our continuous monitoring systems provide real-time data at higher frequencies and are aimed at facilitating effective pollution reporting, timely mitigation measures, process optimization and better compliance.

## Data Security

To keep your valuable data safe from threats and breaches, all communication from client software to central server is end-to-end encrypted using RSA/AES algorithm. By using these mathematically efficient cryptographic algorithms, we ensure your data's safety and integrity at all times.

### Key Features:

- Low Bandwidth Requirement
- Supports ISO 7168 and JSON format
- TLS (Transport Layer Security)
- Encryption Key Management

## Camera Monitoring

We provide installation of IP cameras with pan-tilt-zoom, night vision capability, 10x zoom and other CPCB/SPCB prescribed specifications with real-time streaming and transmission. To stay CPCB compliant, our system also stores data for three months for easy retrieval.

## Data Validation

With TelePRO, you can trust the data you receive to make crucial decisions around environment management. Data is your most valuable asset and we make every effort to ensure its safety, quality, accuracy and authenticity.

### Key features of our data validation engine

- GPS location mapping to verify physical data source location
- Digital signature verification to ascertain authenticity



- Data classification as per quality codes
- Rejection of data between specific time periods as per industry specifications

## Remote Calibration/Configuration

TelePRO allows for remote zero and span calibration and configuration as per CPCB and SPCB guidelines for steady regulatory compliance. Additionally, audit logs are maintained to help industries maintain a consistent record of actions performed.

## Scalability & Reliability

- Share information safely with multiple stakeholders in multiple formats through secure API integrations
- Store large amounts of data with enhanced Big Data functionalities
- Make accurate timestamps and synchronize all devices across a network with NTP
- Configure logging of data on local device to safeguard information in events of network downtime Security & Integrity
- Maintain audit logs to prevent security breaches and misuse of valuable information
- Detect fraud and potential; threats to information with data analytics
- Ensure utmost data safety and integrity with SSL, data signature verification and stringent validation tests
- Real-time streaming of video feed over secure channels and protected by powerful algorithms